

3.875
6.74

30
30
1.51
115
3.825
365
6.14
365

365
4.26
24
2.385
115
2.26
365
4.26
24
1.825
175
2.76
365

3.125
3.875
6.74

- 1,20

0,30

- 0,10

- 0,10

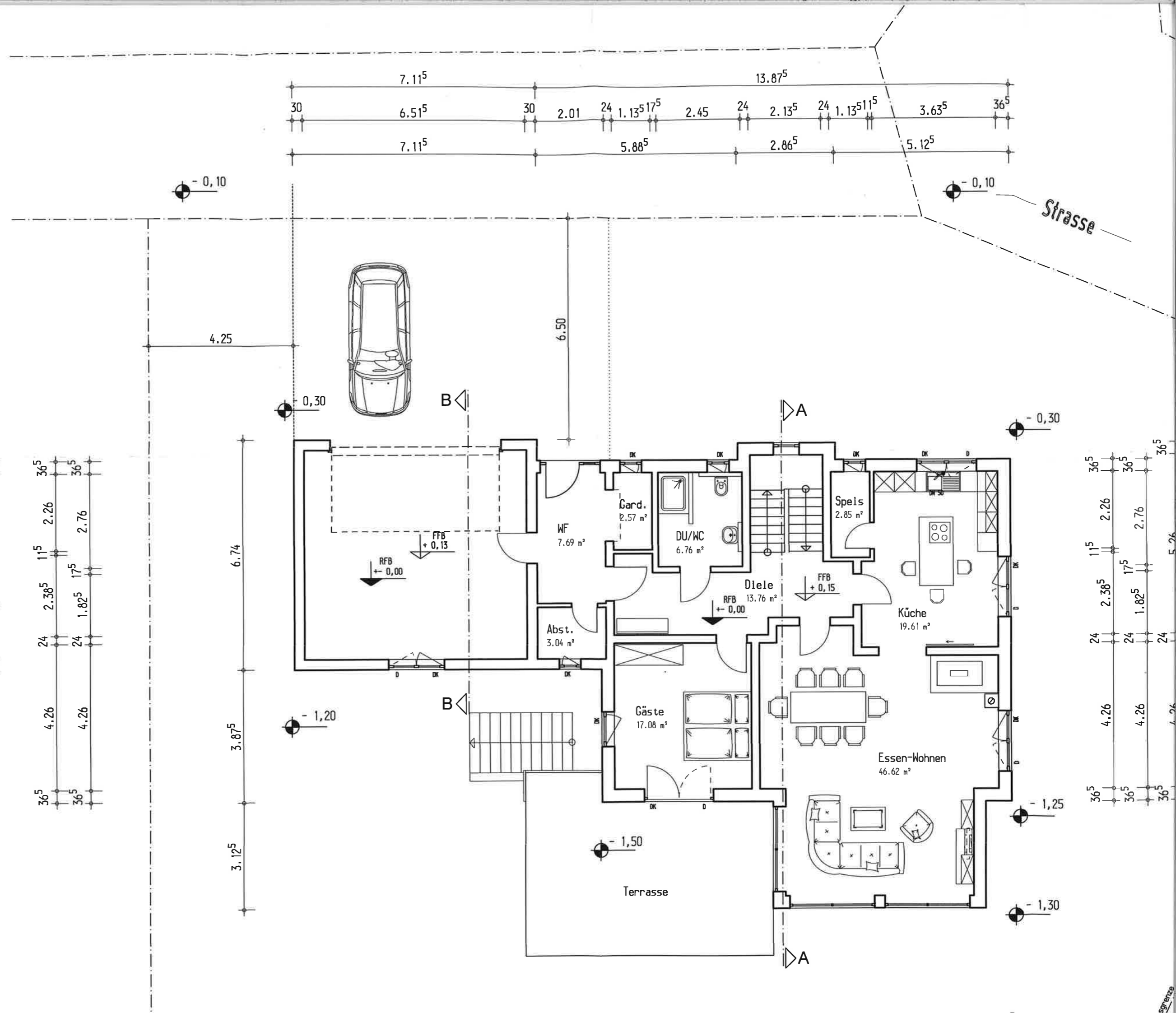
- 0,30

- 1,50

- 1,25

- 1,30

365
4.26
24
2.385
115
2.26
365
4.26
24
1.825
175
2.76
365
5.26
365



Strasse

B

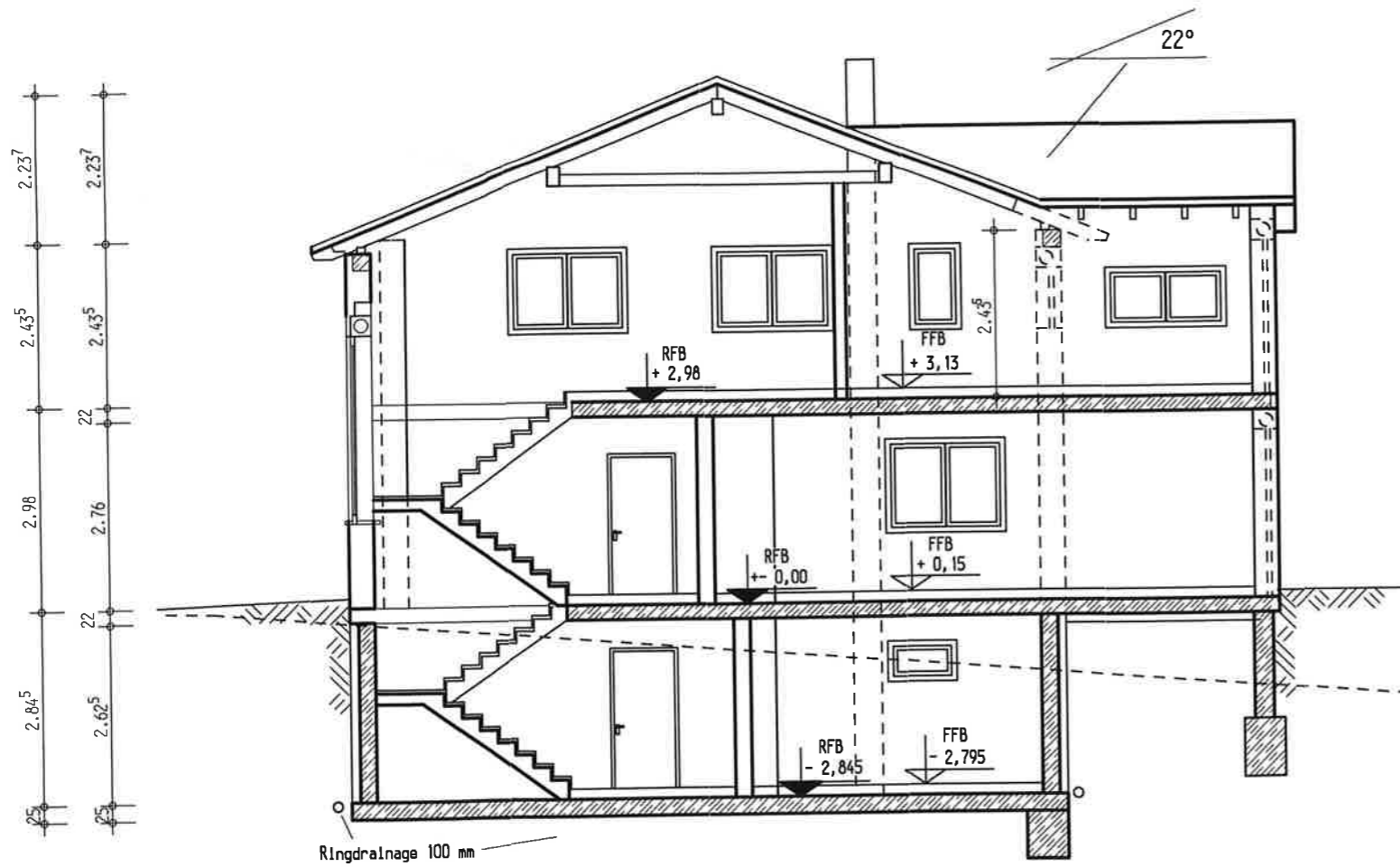
A

B

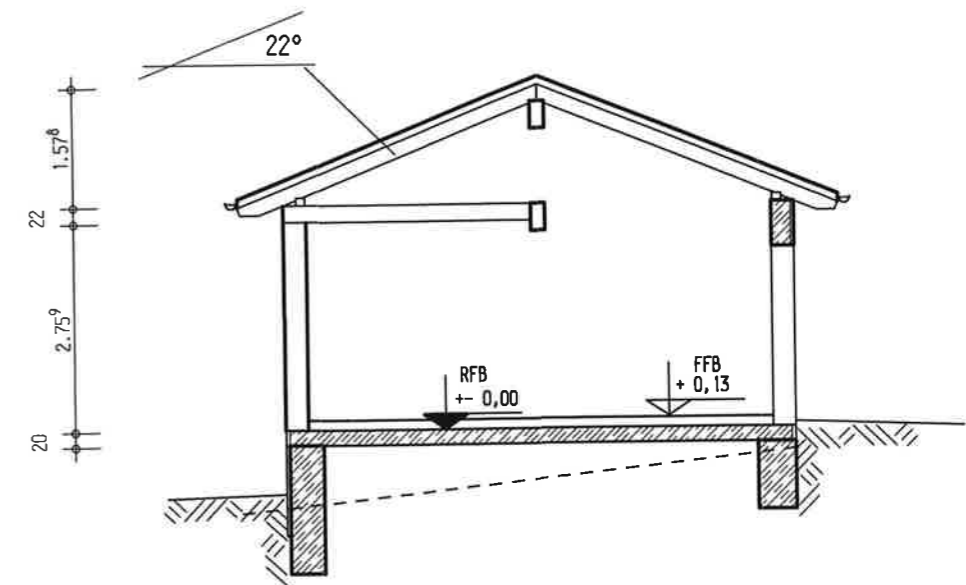
A

Sgrænze

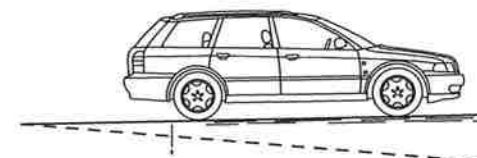
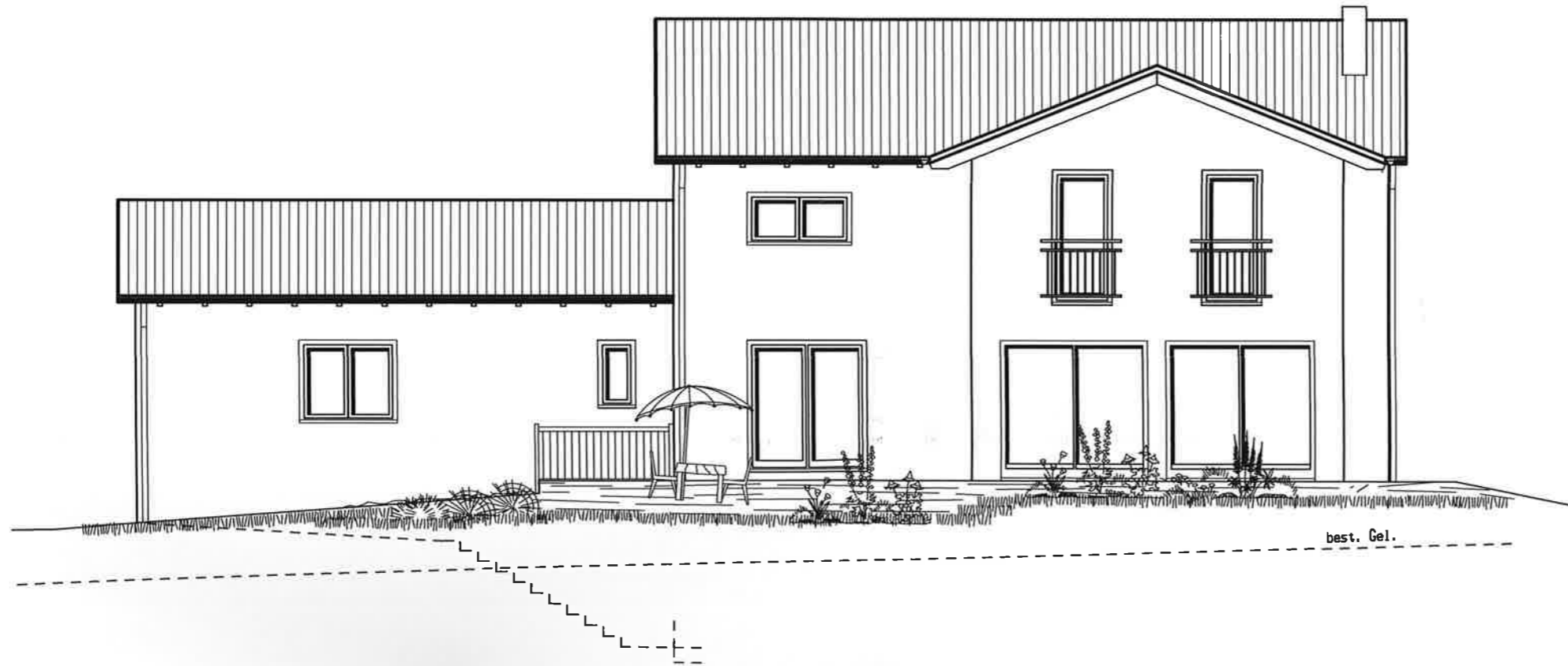
Schnitt A-A



Schnitt B-B



Süden



Osten

Westen

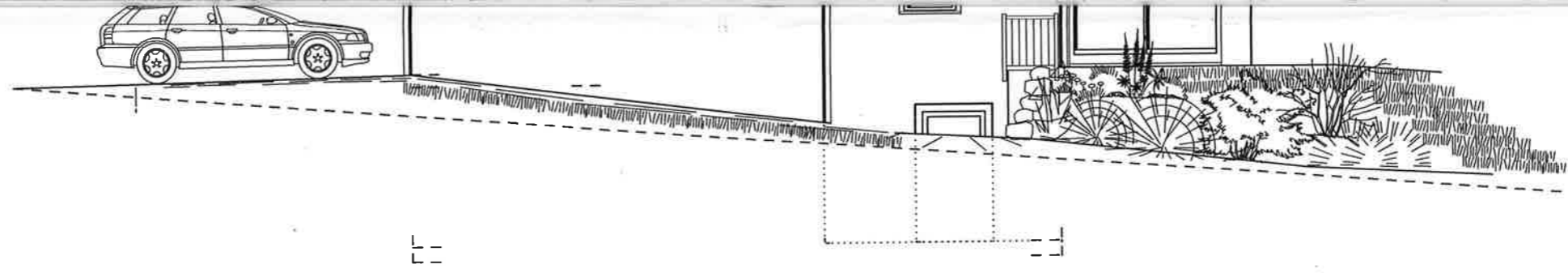


Norden

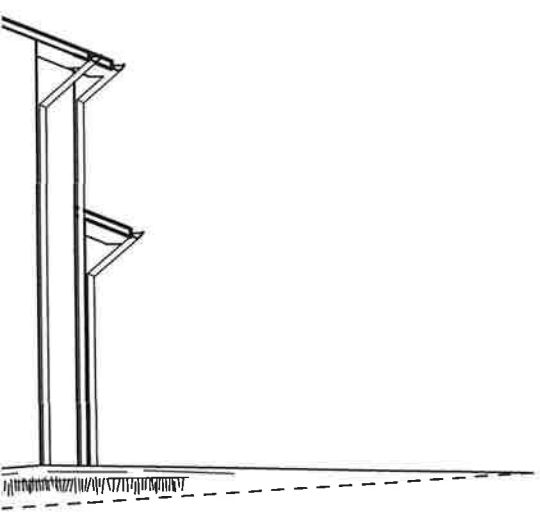
Gemeinde:	



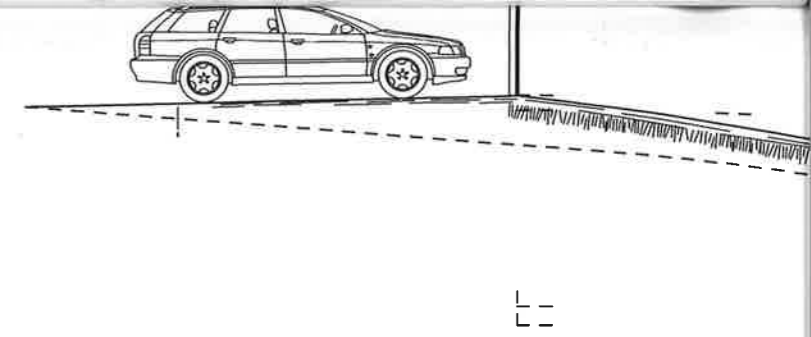
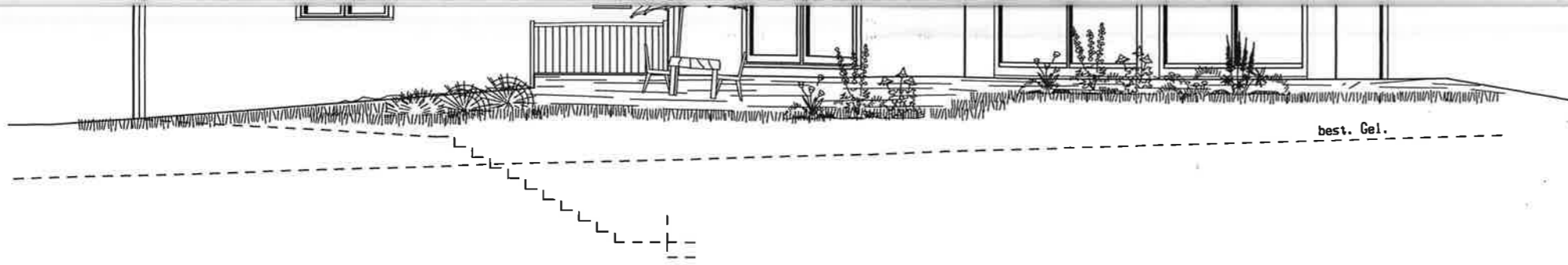
best. Gel.



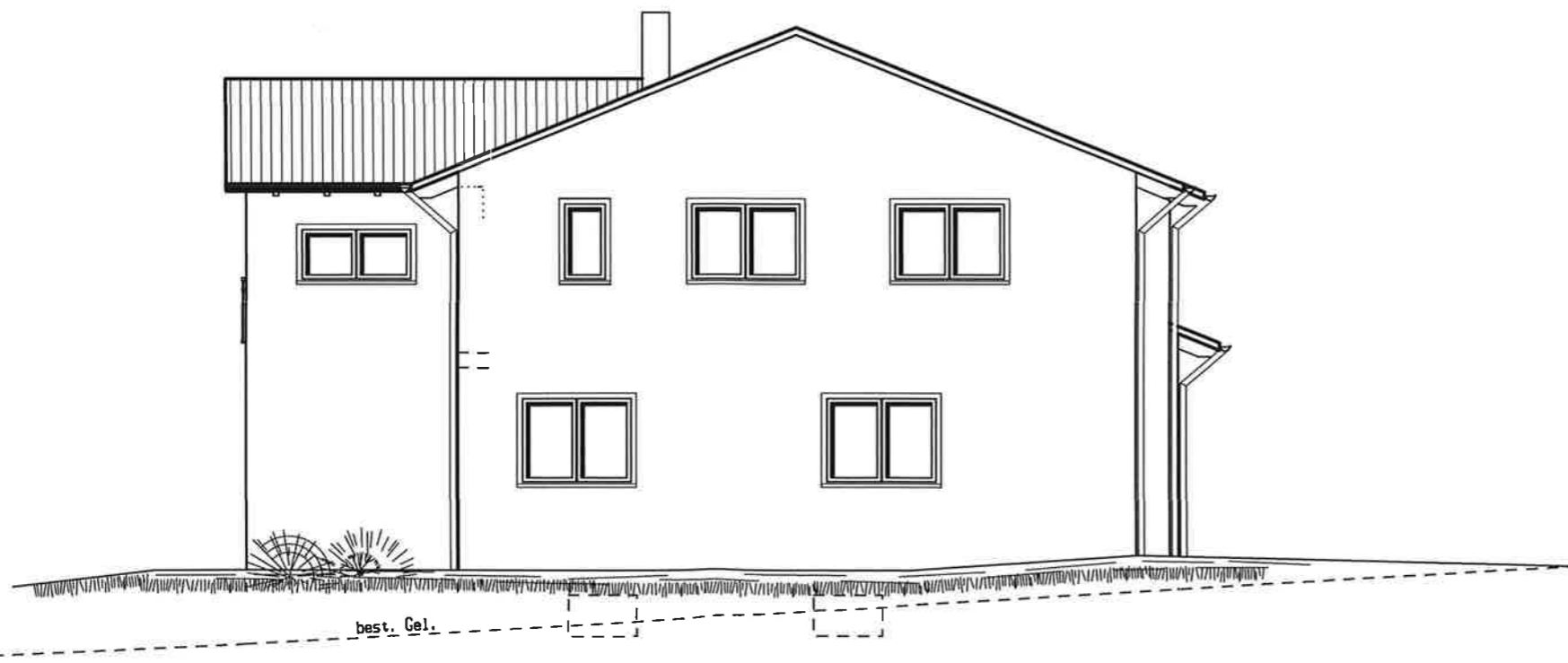
Norden



Strasse



Osten



Nord

